



21-22 May 2026

## COMPARATIVE DYNAMICS OF FOREST AREAS IN ROMANIA AND HUNGARY - IMPLICATIONS FOR SUSTAINABLE RESOURCE GOVERNANCE

FIRU NEGOESCU GHEORGHE ADRIAN<sup>\*1</sup>, OCNEAN MONICA<sup>\*1</sup>, MOATAR MIHAELA<sup>2</sup>, STEFAN CAROLINA<sup>2</sup>, DRAGOMIR PETRE IOAN<sup>2</sup>

<sup>1</sup>University of Life Sciences „King Mihai I” from Timisoara, Faculty of Management and Rural Tourism

<sup>2</sup>University of Life Sciences „King Mihai I” from Timisoara, Faculty of Engineering and Applied Technologies

**Abstract:** This study comparatively analyses the dynamics of forest areas in Romania and Hungary over the period 1990–2022, aiming to highlight the implications of different forest governance models for sustainable resource management. Using longitudinal data, the research examines both the evolution of total forest areas and the annual rates of variation recorded in the two countries.

### • Introduction

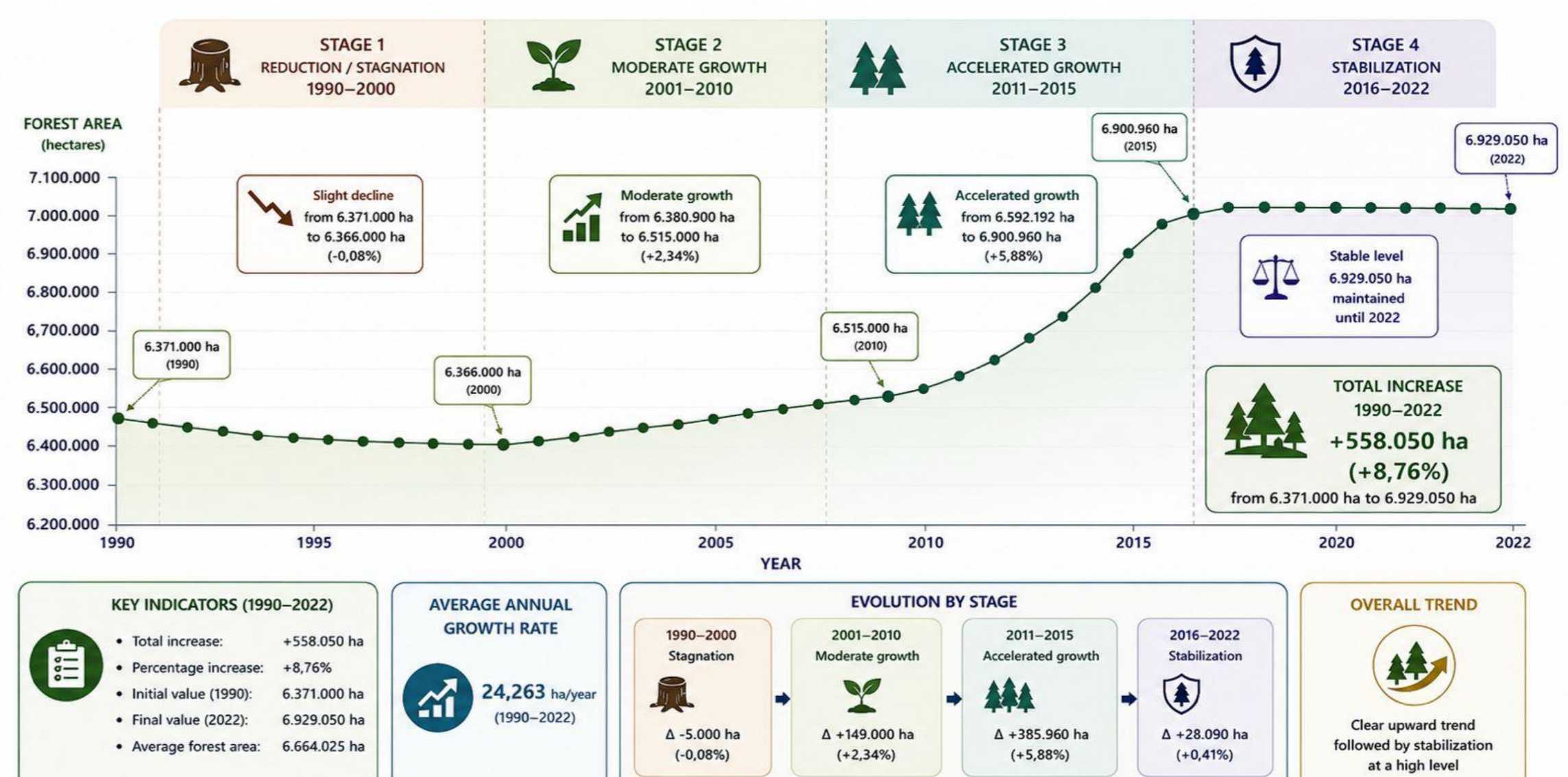
Romania and Hungary are two relevant examples for the comparative analysis of forest governance in the region. Although both countries have gone through similar processes of economic transition and European integration, the evolution of the forest fund and the strategies for managing forest resources have followed distinct trajectories.

### • Material and method

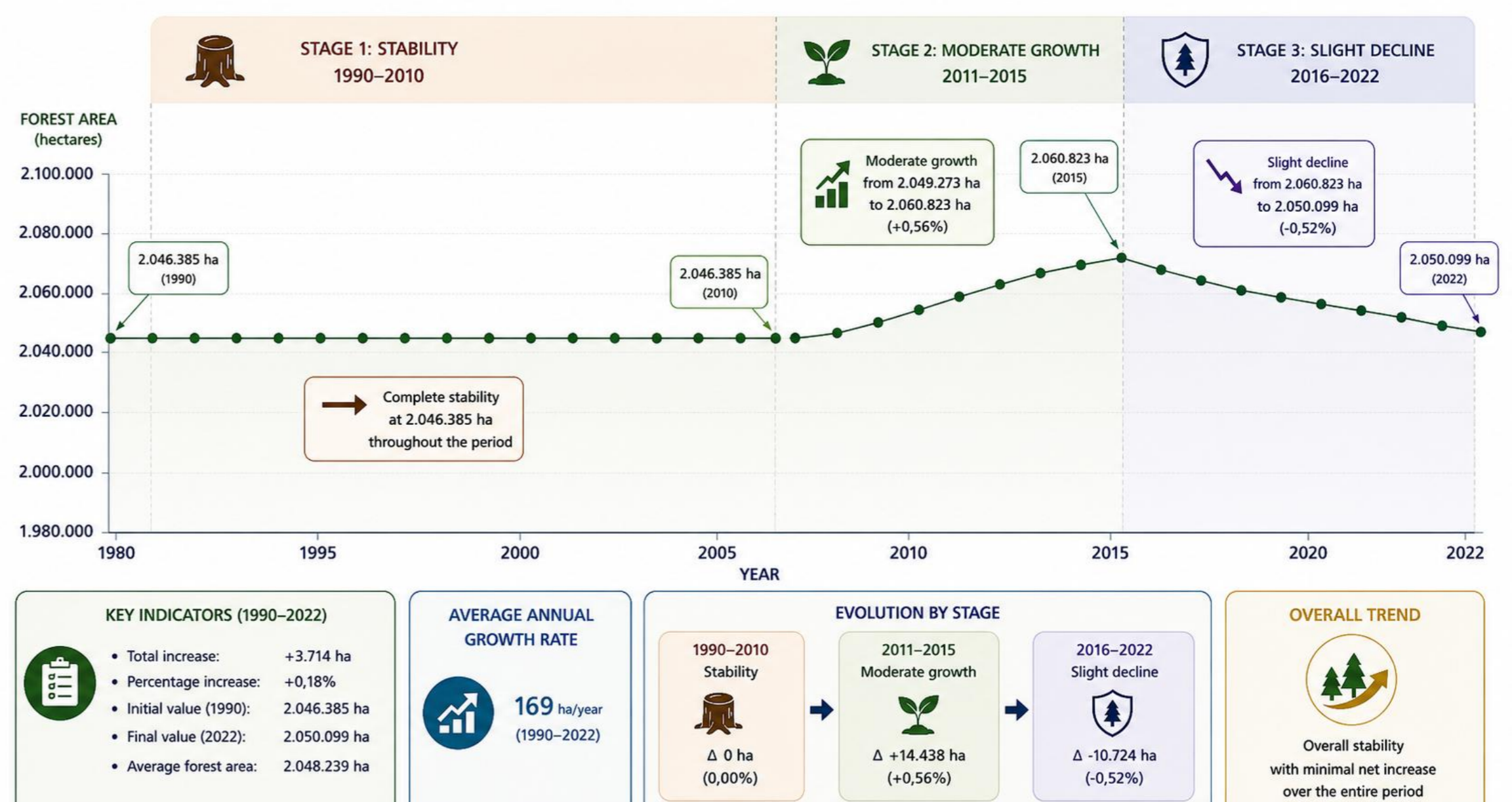
This research uses a comparative and longitudinal approach to analyze the dynamics of forested areas in Romania and Hungary during the period 1990–2022. In this sense, the research included: analysis of the evolution of the total forested area, analysis of the annual rate of variation of the forested areas and comparative analysis of the forest trajectories in Romania and Hungary. In this context, the research has both a quantitative component, based on the analysis of statistical indicators, and an interpretative component, oriented towards the assessment of the economic and ecological implications of changes in the forest fund. Thus, the comparative analysis allows highlighting the relationship between the evolution of the forest fund and models of sustainable governance of natural resources.

### • Results and discussions

The analyzed data highlights the evolution of the forested area in Romania during the period 1990–2022, an interval in which the forest fund registered a general growth trend, but with different rates of evolution over time.



The reduced dynamics of forested areas in Hungary reflects a forestry model oriented towards stability, efficiency and functional optimization.



### • Conclusions

Both countries have gone through similar processes of economic transition and European integration, but the results show important differences in terms of the pace, intensity and orientation of forest policies.